

Part No.

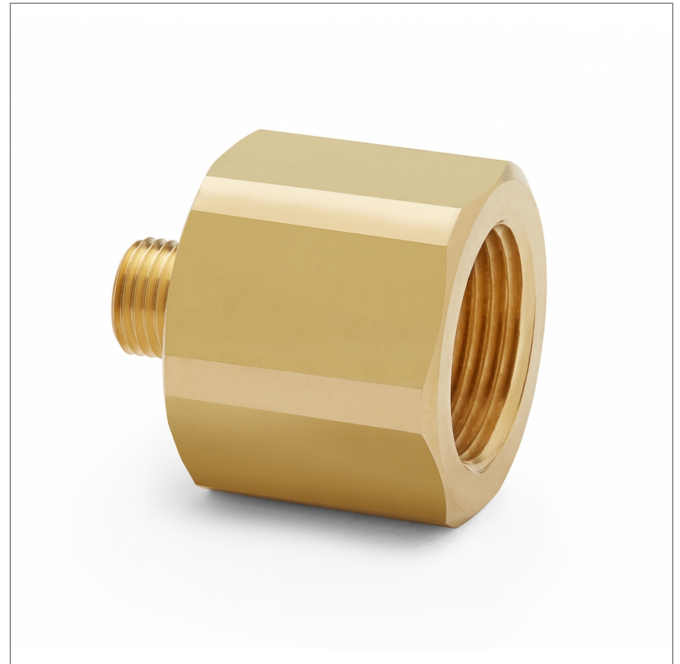
QTHA-6FB0

3/4" female NPT X male Quick-test, no check-valve, brass

Connect a Quick-test hose to a pressure gauge or any device with a male NPT connection using thread sealant and a wrench

Features

- Connect to pressure gauges with NPT connections
- Adapt to a wide range of Male NPT process connections
- Made in USA



QTHA-6FB0

Specifications

Pressure Range	0 to 5000 psi (0 to 345 bar)
End C1	3/4" Female NPT
End C2	Male Quick-test
Has Check Valve	No
Maximum Working Temperature	225 °F (107 °C)
Construction	Brass
Seal materials	Buna-N
Dimensions A	1.59 in (4.04 cm)
Dimensions B	1.37 in (3.48 cm)